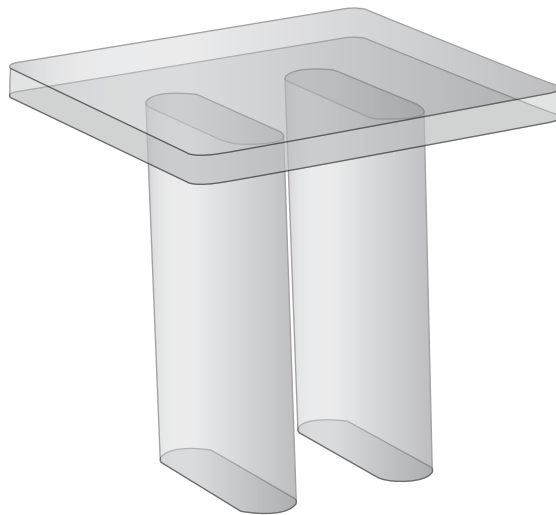


BERG SIDE TABLE

by John Pawson, 2021

COLLECTION

SPECIFICATION



WONDERGLASS

BERG SIDE TABLE

by John Pawson

The character of the Berg table is inseparable from its materiality. Every detail of the design derives from the mesmerising visual and tactile qualities of cast glass and from the scope the medium allows for exploring the charged threshold between concreteness and abstraction.

MATERIALS

Cast Glass

DIMENSIONS

D 400 x W 400 x H 400 MM

COLOURS



Crystal

